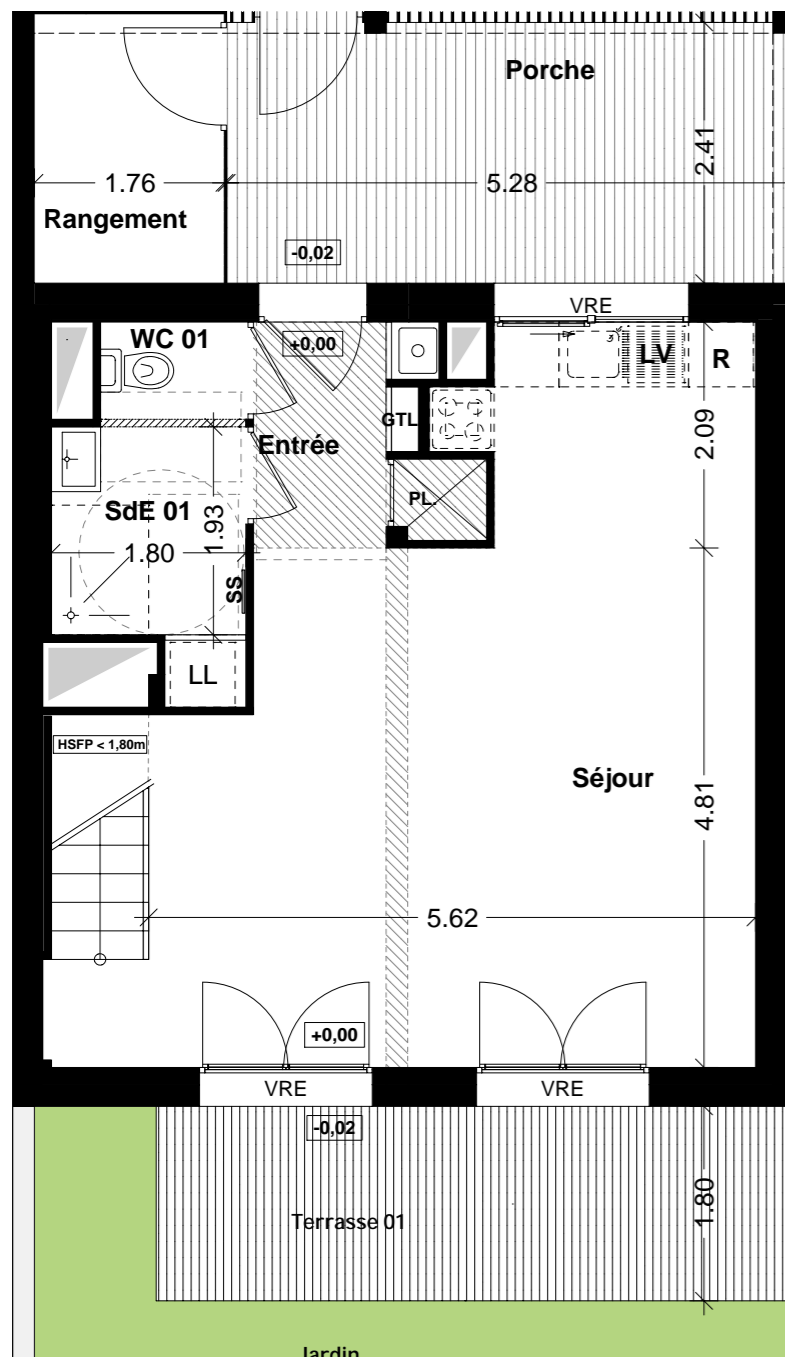


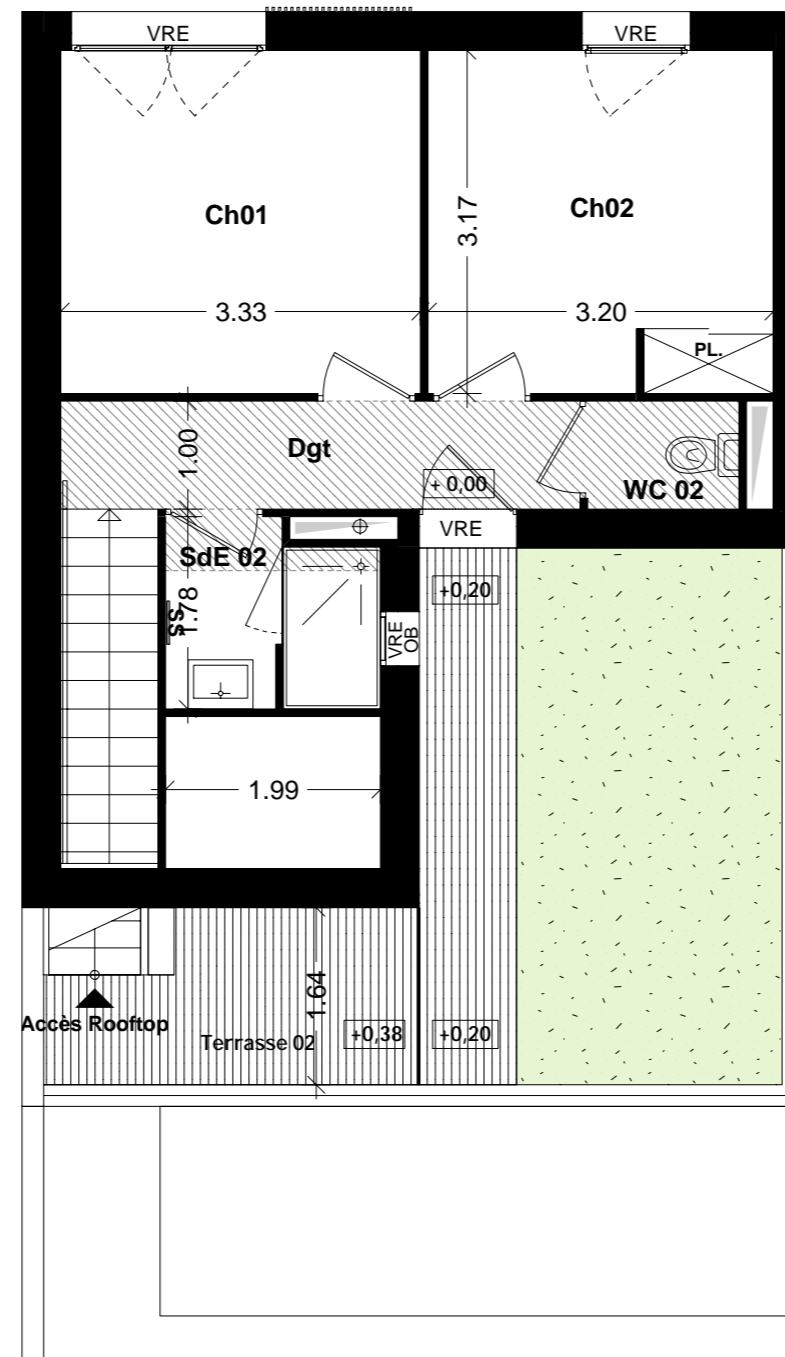


ORIGAMI

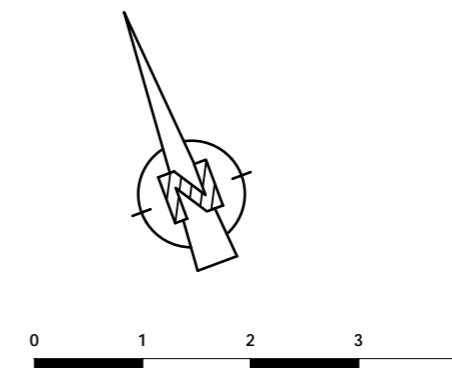
Angers



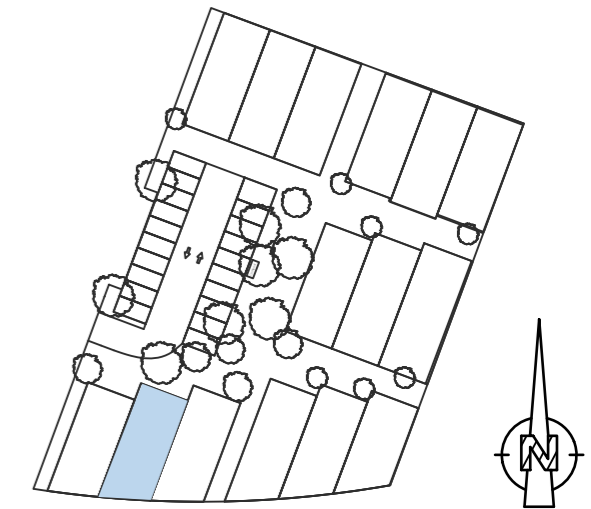
Rez-de-chaussée



Etage



LEGENDE	
	GAINE
	CHAUDIERE GAZ
	POELE A GRANULE
	TERRASSE
	FAUX PLAFOND / SOFFITE RETOMBE DE POUTRE
	GAZON
	COMPLEXE VEGETAL DE TYPE SEDUM
	TABLEAU ELECTRIQUE
	SECHE SERVIETTES ELECTRIQUE
	CLOISON AMOVIBLE
	VOLET ROULANT ELECTRIQUE
	FENETRE
	PORTE FENETRE
	FENETRE OSCILLO-BATTANT



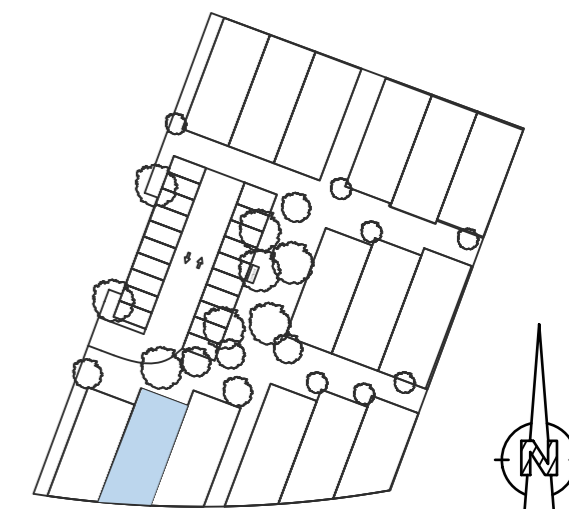
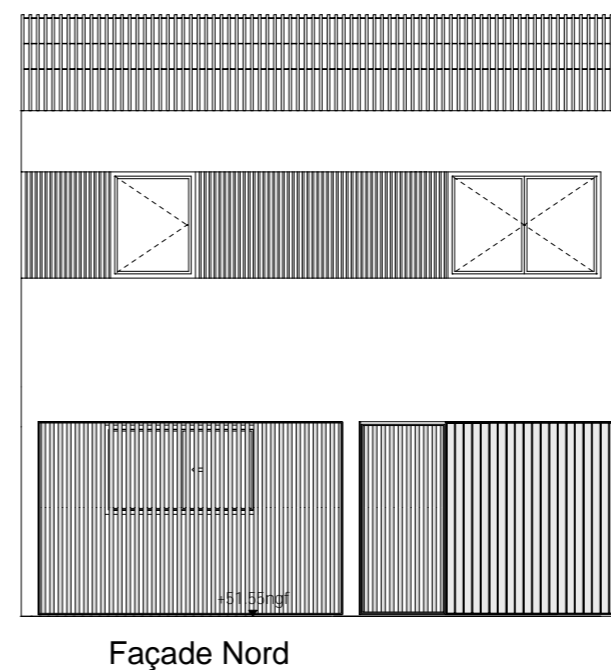
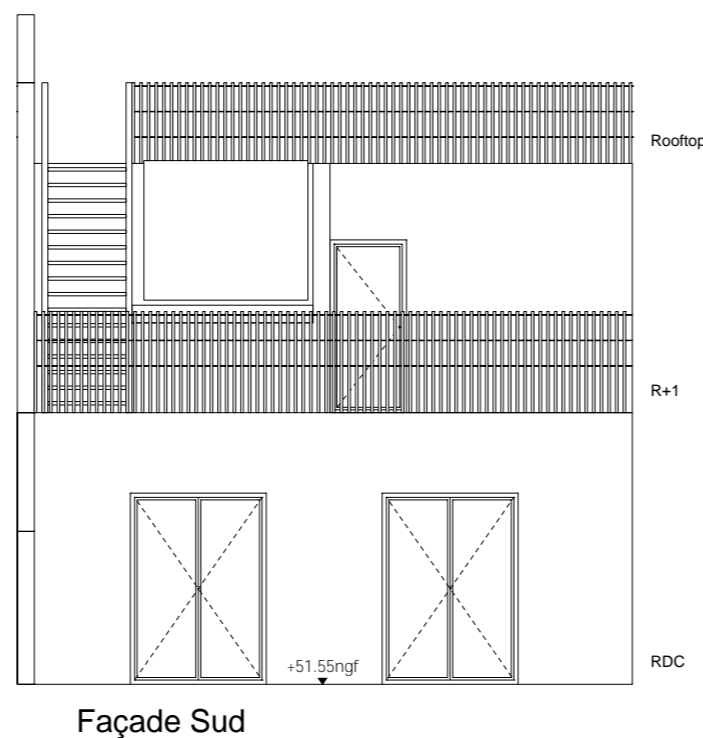
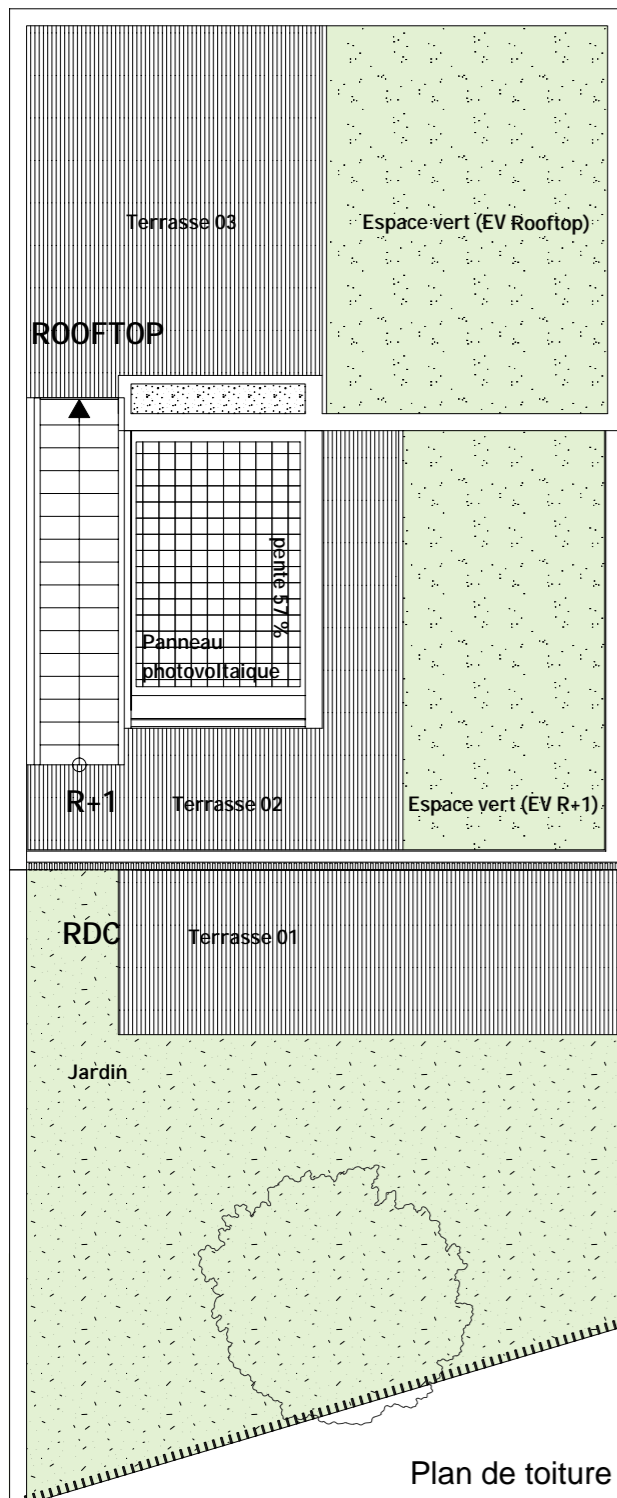
N° MAISON	TYPE
11	T3

PIECES	SURFACES	
	habitables	utiles
Séjour	31,94 m ²	33,99 m ²
Entrée	3,20 m ²	3,20 m ²
WC 01	1,21 m ²	1,21 m ²
SdE 01	3,97 m ²	3,97 m ²
Dégagement	4,81 m ²	4,81 m ²
WC 02	1,40 m ²	1,40 m ²
SdE 02	3,24 m ²	3,24 m ²
Chambre 01	10,55 m ²	10,55 m ²
Chambre 02	10,11 m ²	10,11 m ²
TOTAL	70,43 m²	72,48 m²
Porche	12,72 m ²	
Rangement ext.	4,24 m ²	
INDICE: 05	DATE: 06/12/2022	



ORIGAMI

Angers



N° MAISON	TYPE
11	T3

EV Rooftop	15,10 m ²
EV R+1	12,21 m ²
Jardin	34,50 m ²
Terrasse 01	10,63 m ²
Terrasse 02	9,42 m ²
Terrasse 03	14,60 m ²
Porche	12,72 m ²
Rangement ext.	4,24 m ²
PARCELLE	120 m²
SHAB	70,43 m²

