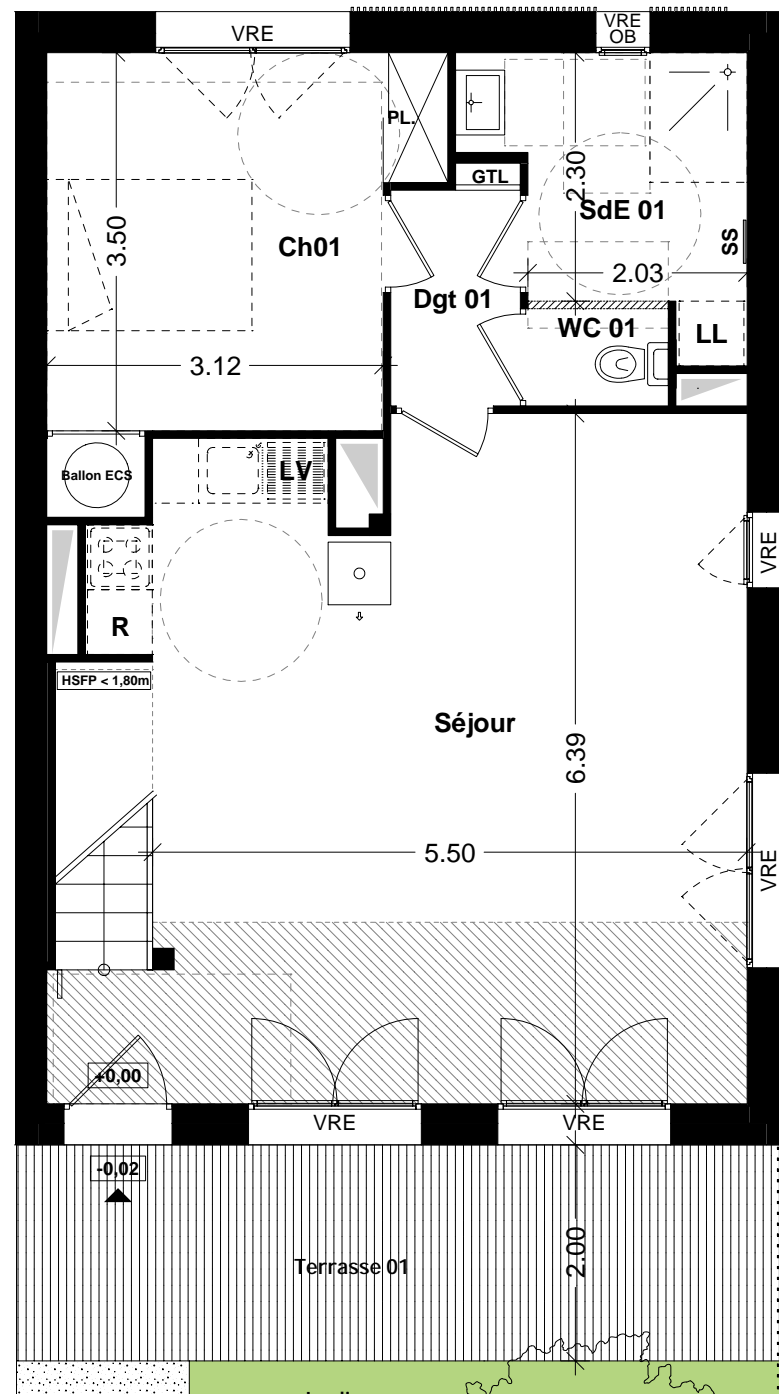


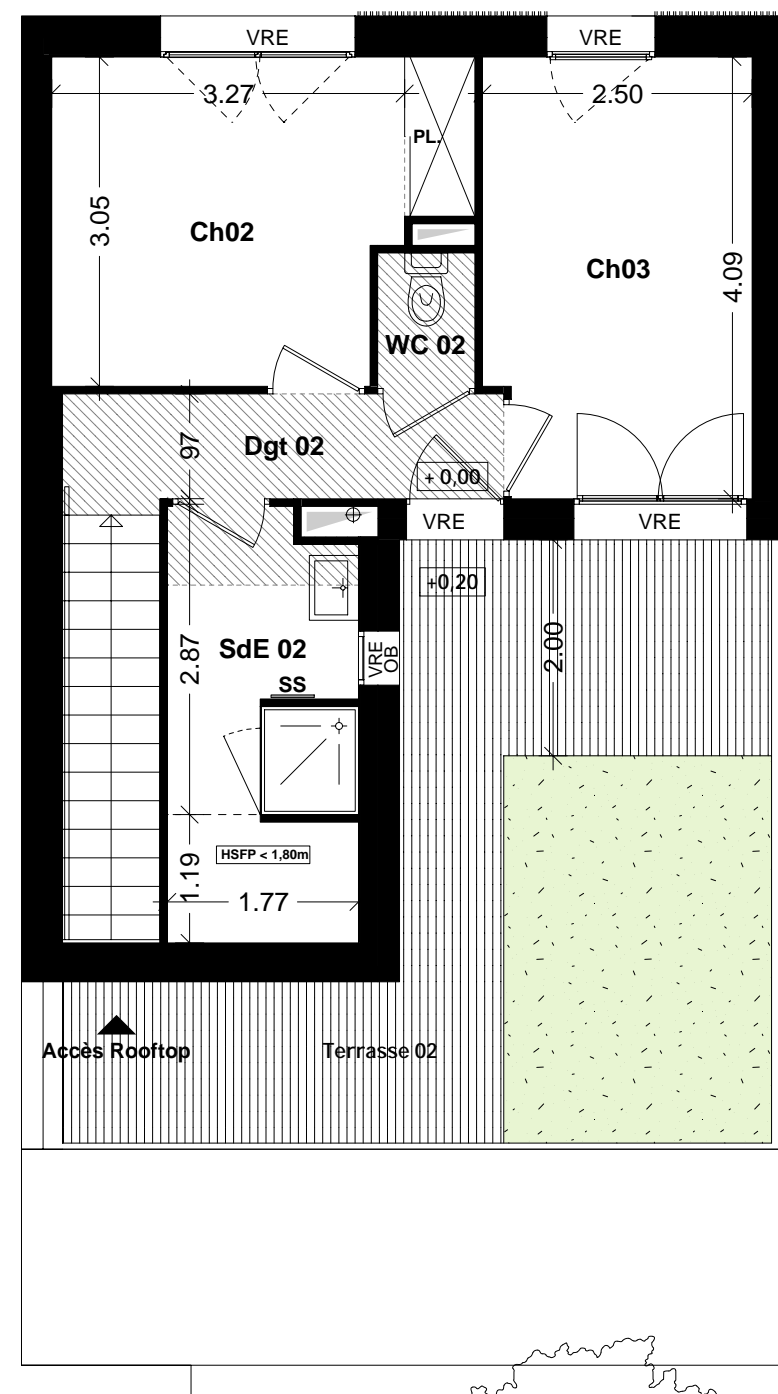


ORIGAMI

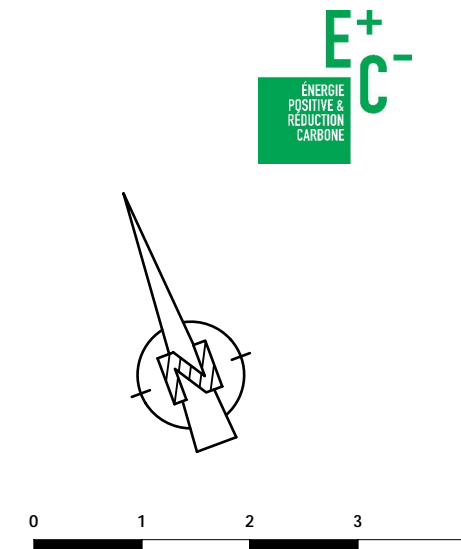
Angers



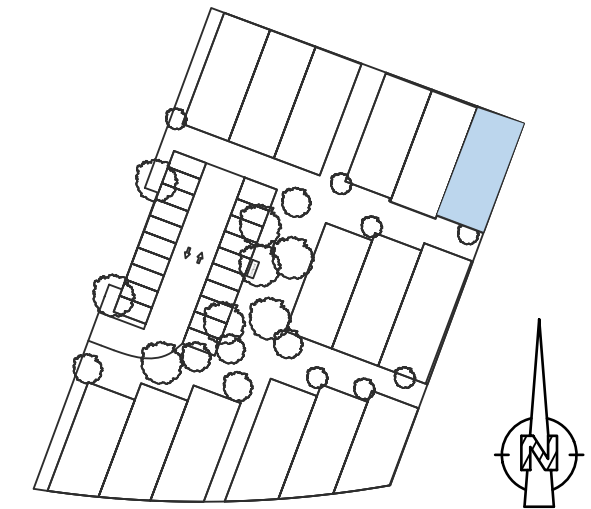
Rez-de-chaussée



Etage



LEGENDE	
	GAINE
	CHAUDIERE GAZ
	POELE A GRANULE
	TERRASSE
	FAUX PLAFOND / SOFFITE RETOMBE DE POUTRE
	GAZON
	COMPLEXE VEGETAL DE TYPE SEDUM
	TABLEAU ELECTRIQUE
	SECHE SERVIETTES ELECTRIQUE
	CLOISON AMOVIBLE
	VOLET ROULANT ELECTRIQUE
	FENETRE
	PORTE FENETRE
	FENETRE OSCILLO-BATTANT



N° MAISON

TYPE

06

T4

PIECES

SURFACES

	habitables	utiles
	Séjour	36,11 m ²
WC 01	1,17 m ²	1,17 m ²
SdE 01	5,68 m ²	5,68 m ²
Chambre 01	12,29 m ²	12,29 m ²
Dégagement 01	2,40 m ²	2,40 m ²
Dégagement 02	4,10 m ²	4,10 m ²
WC 02	1,11 m ²	1,11 m ²
SdE 02	4,95 m ²	6,98 m ²
Chambre 02	10,50 m ²	10,50 m ²
Chambre 03	9,94 m ²	9,94 m ²

TOTAL

88,25 m²

92,78 m²

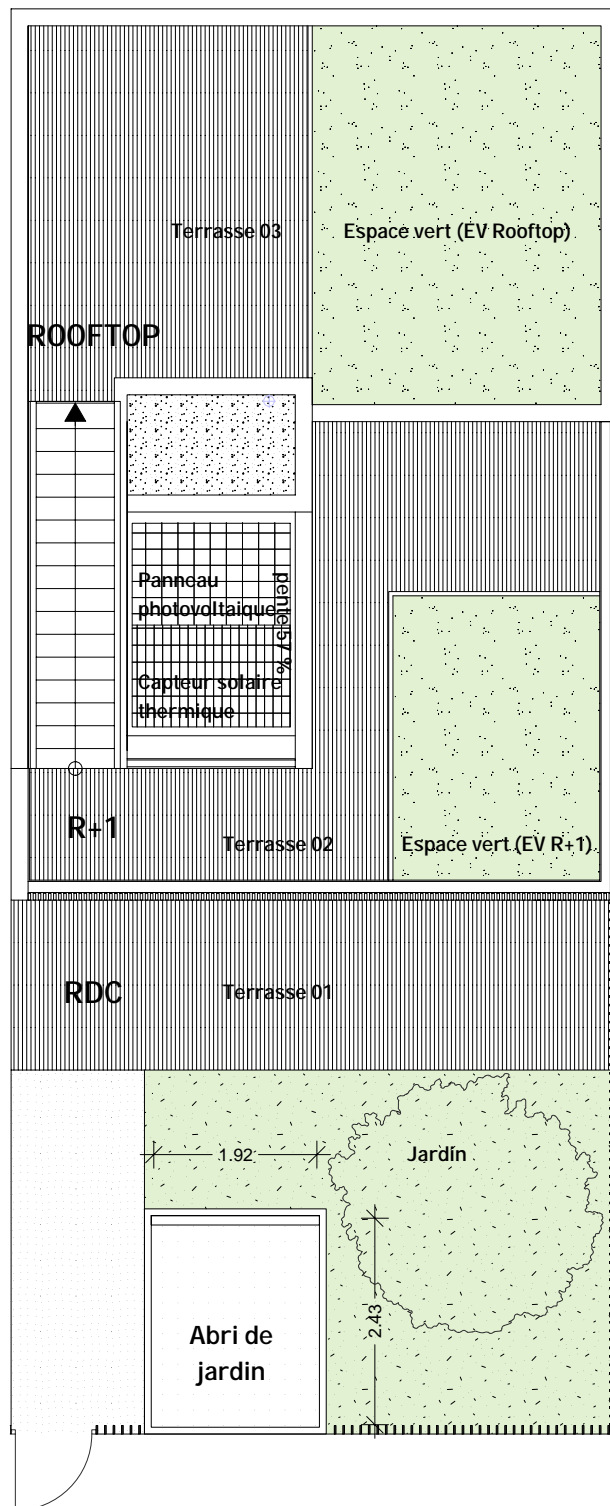
INDICE: 05

DATE: 06/12/2022

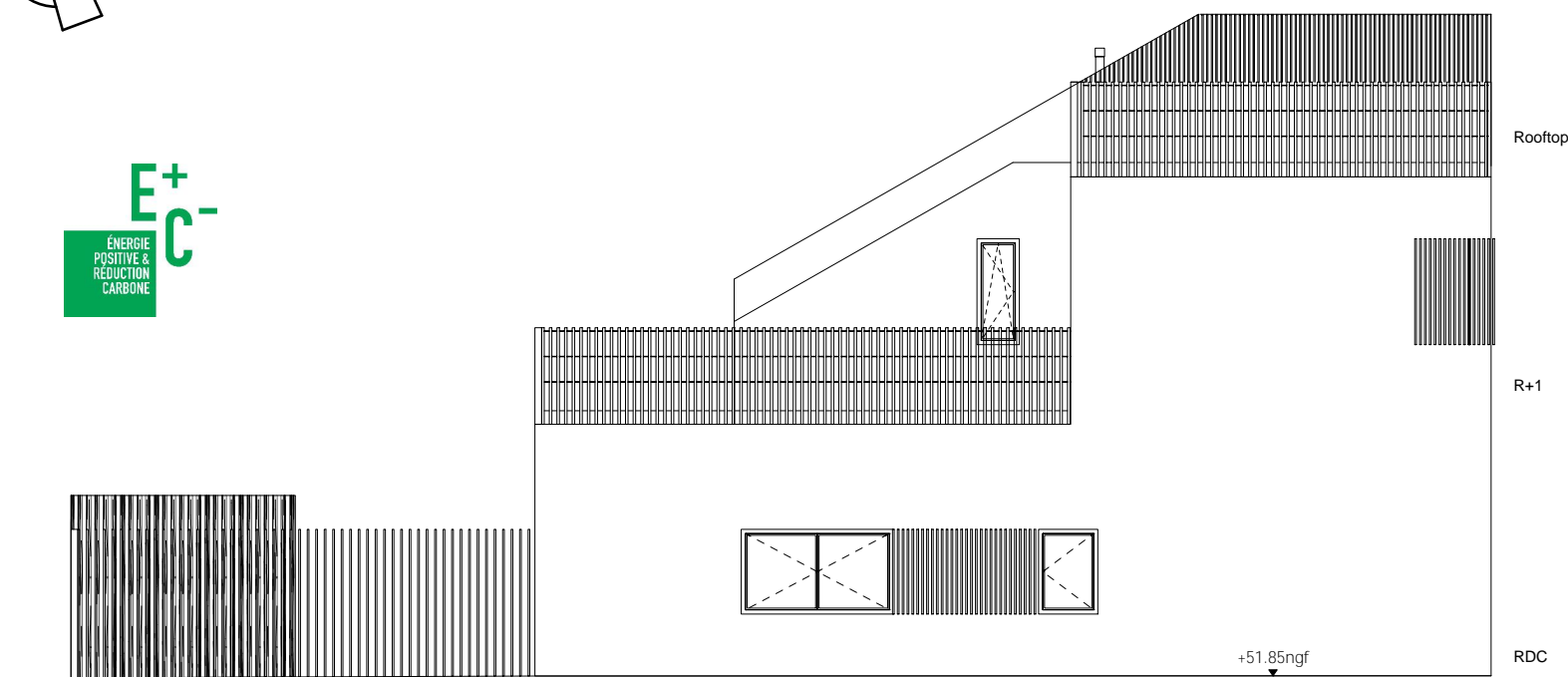
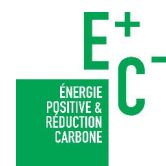
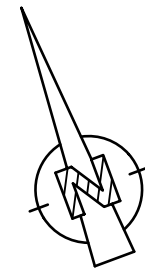
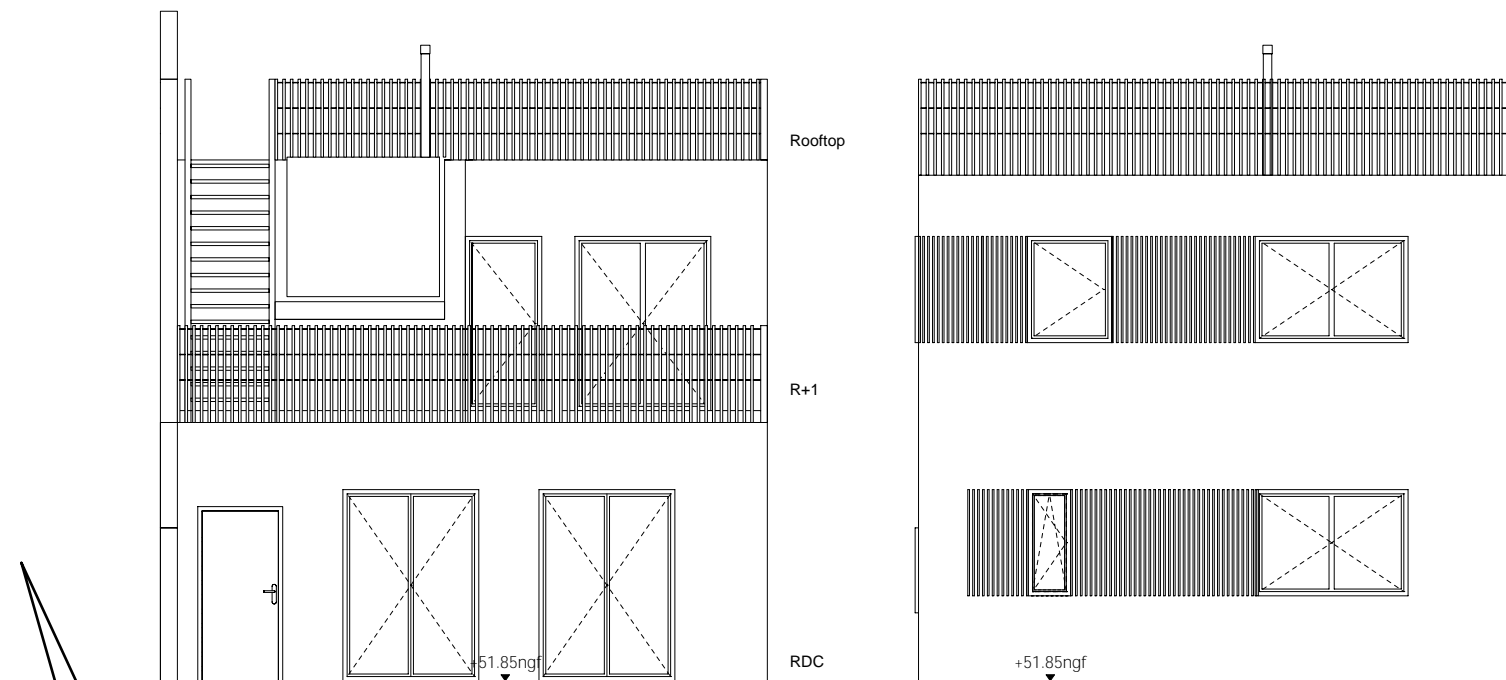


ORIGAMI

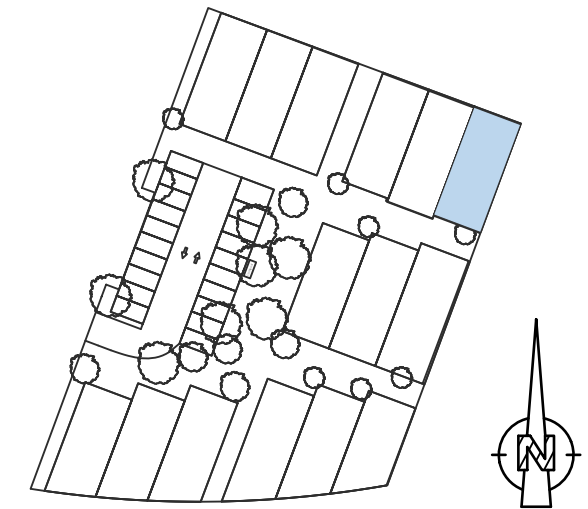
Angers



Plan de toiture



Façade Ouest



N° MAISON	TYPE
06	T4

EV Rooftop	15,15 m ²
EV R+1	8,89 m ²
Jardin	24,60 m ²
Terrasse 01	14,30 m ²
Terrasse 02	15,00 m ²
Terrasse 03	13,93 m ²
Abri de jardin	4,67 m ²

PARCELLE 121 m²

SHAB 88.25 m²