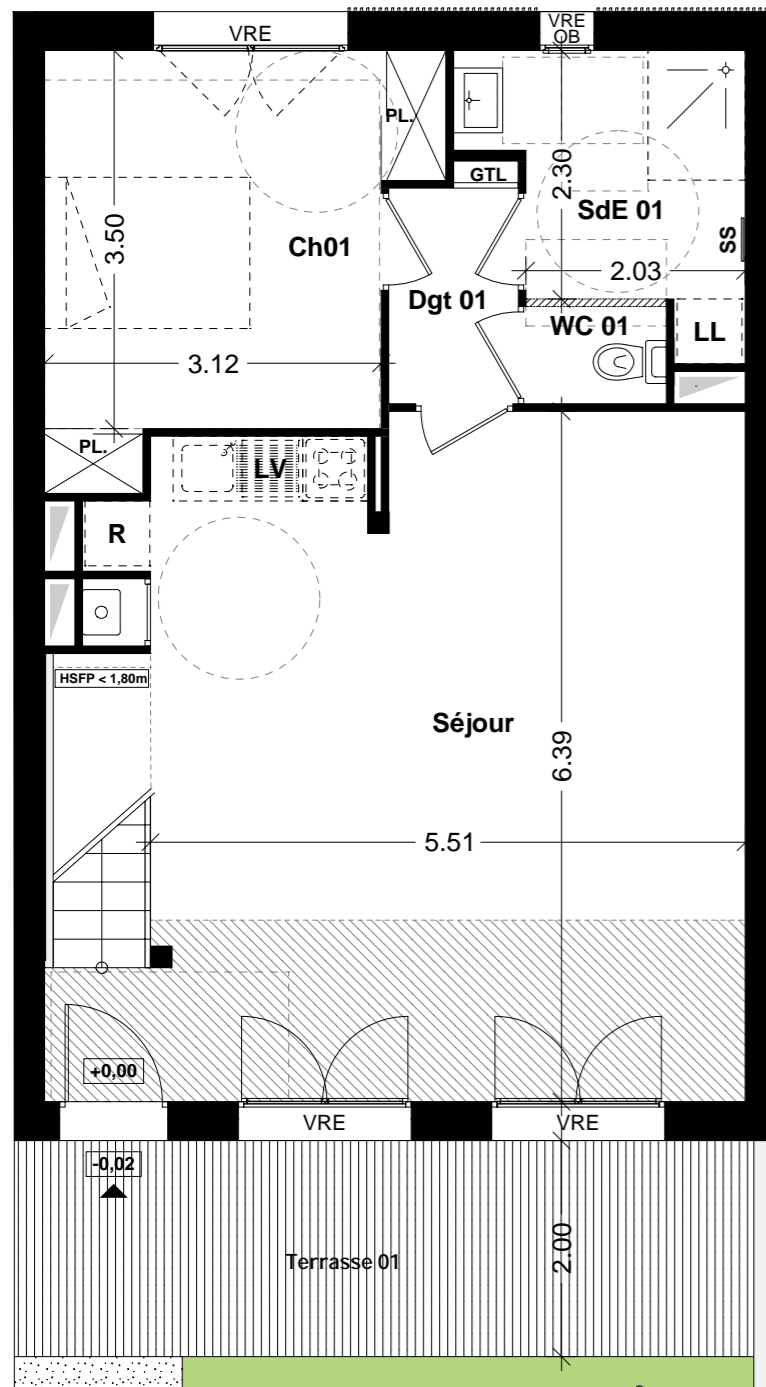


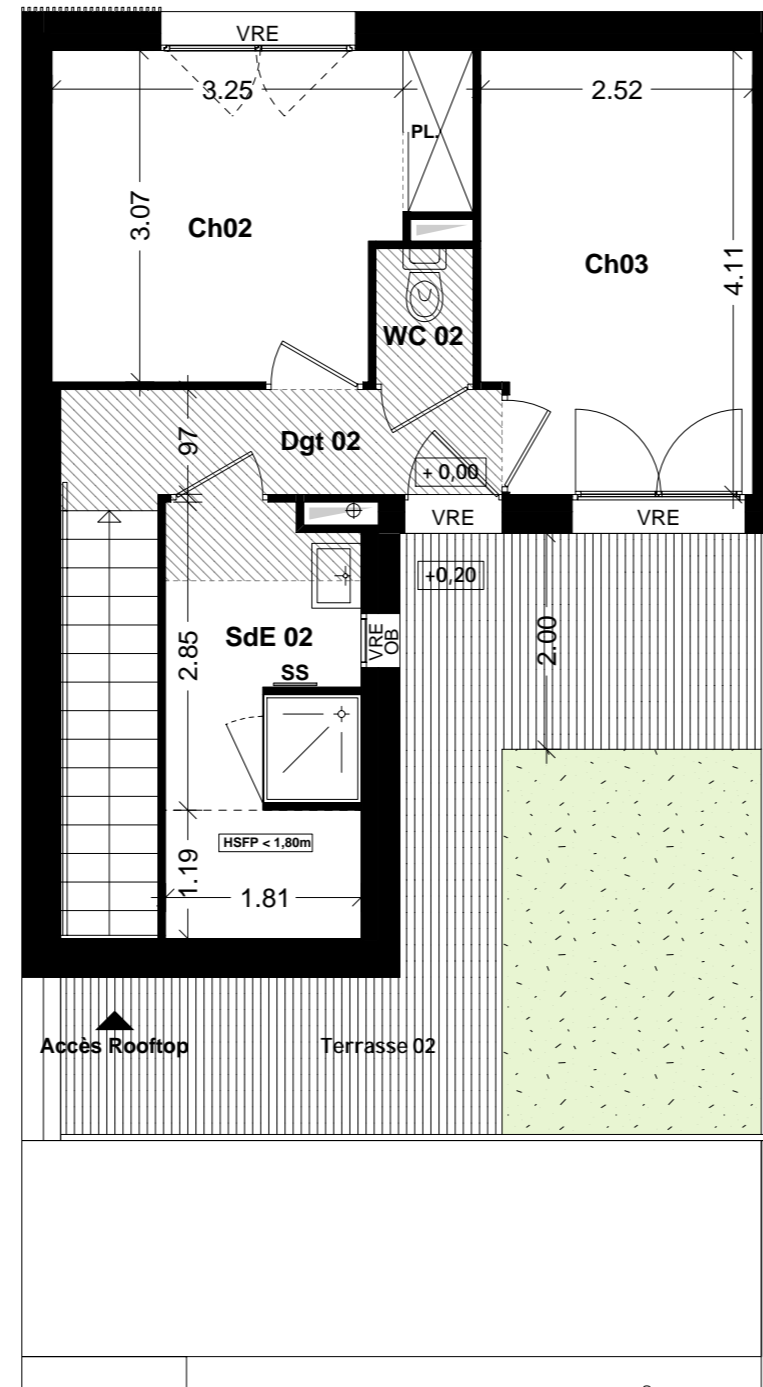


ORIGAMI

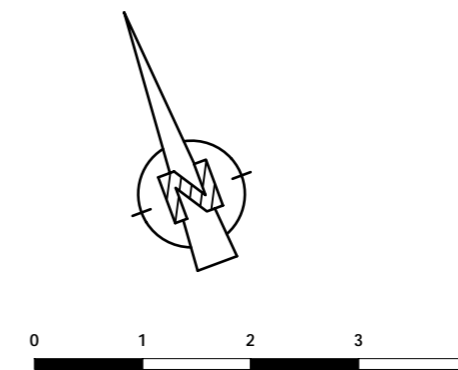
Angers



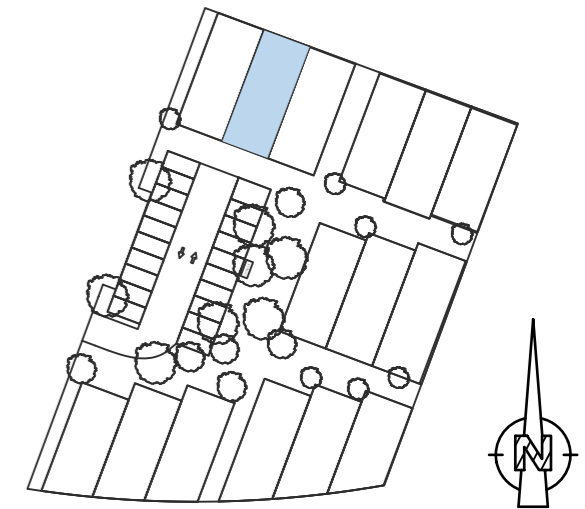
Rez-de-chaussée



Etage



LEGENDE	
	GAINE
	CHAUDIERE GAZ
	POELE A GRANULE
	TERRASSE
	FAUX PLAFOND / SOFFITE RETOMBE DE POUTRE
	GAZON
	COMPLEXE VEGETAL DE TYPE SEDUM
	TABLEAU ELECTRIQUE
	SECHE SERVIETTES ELECTRIQUE
	CLOISON AMOVIBLE
	VOLET ROULANT ELECTRIQUE
	FENETRE
	PORTE FENETRE
	FENETRE OSCILLO-BATTANT



N° MAISON

TYPE

02

T4

PIECES

SURFACES

habitables

utiles

Séjour	36,43 m ²	38,93 m ²
WC 01	1,17 m ²	1,17 m ²
SdE 01	5,68 m ²	5,68 m ²
Chambre 01	12,17 m ²	12,17 m ²
Dégagement 01	2,40 m ²	2,40 m ²
Dégagement 02	4,11 m ²	4,11 m ²
WC 02	1,11 m ²	1,11 m ²
SdE 02	4,86 m ²	7,01 m ²
Chambre 02	10,52 m ²	10,52 m ²
Chambre 03	10,07 m ²	10,07 m ²

TOTAL

88,52m²

93,17 m²

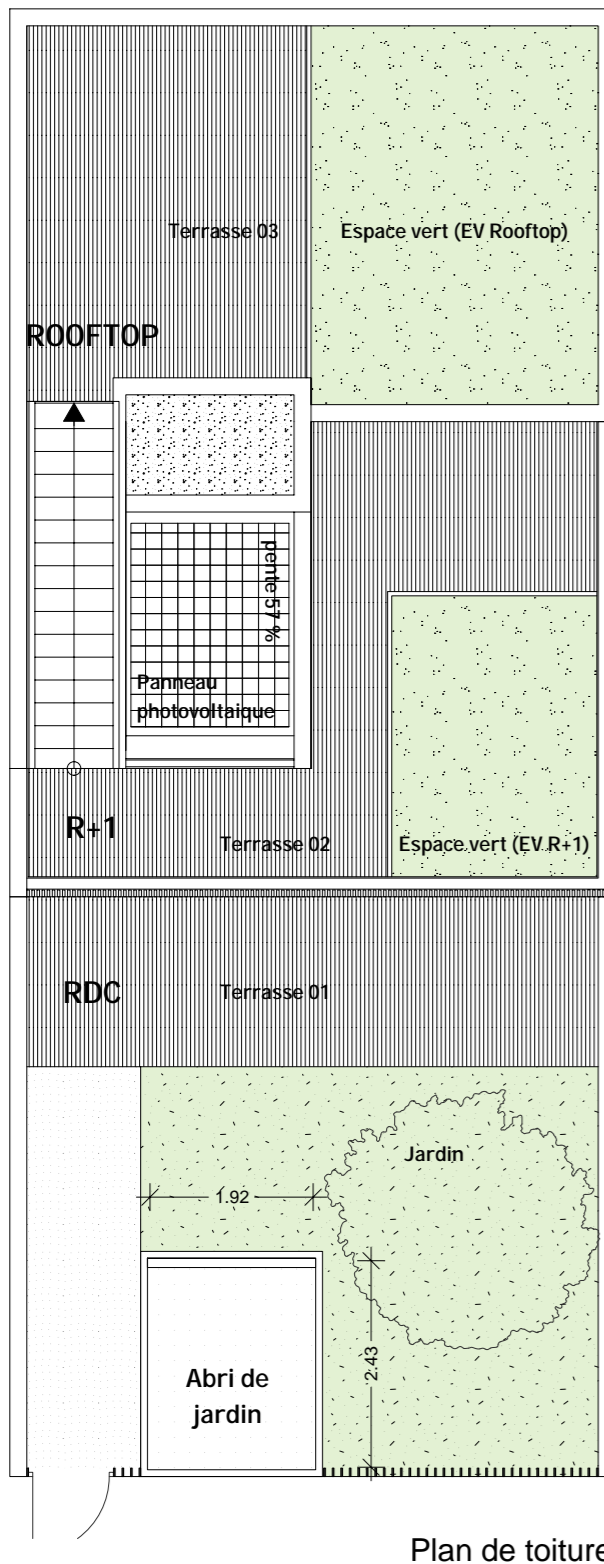
INDICE: 05

DATE : 06/12/2022

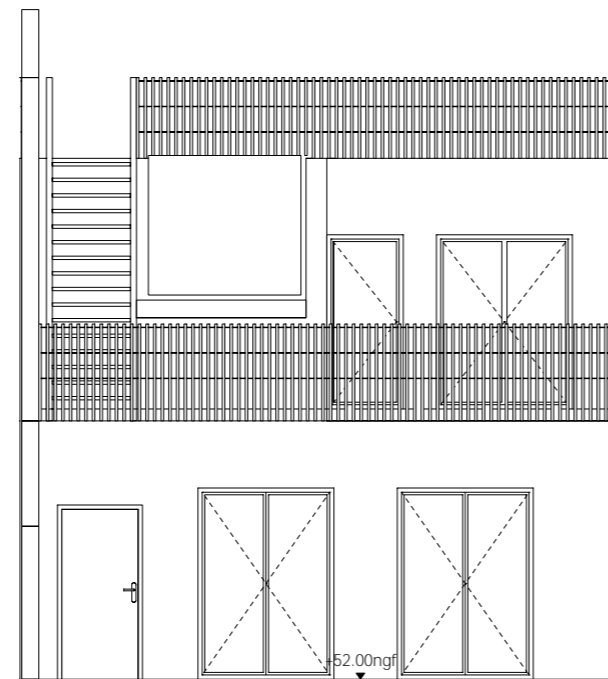


ORIGAMI

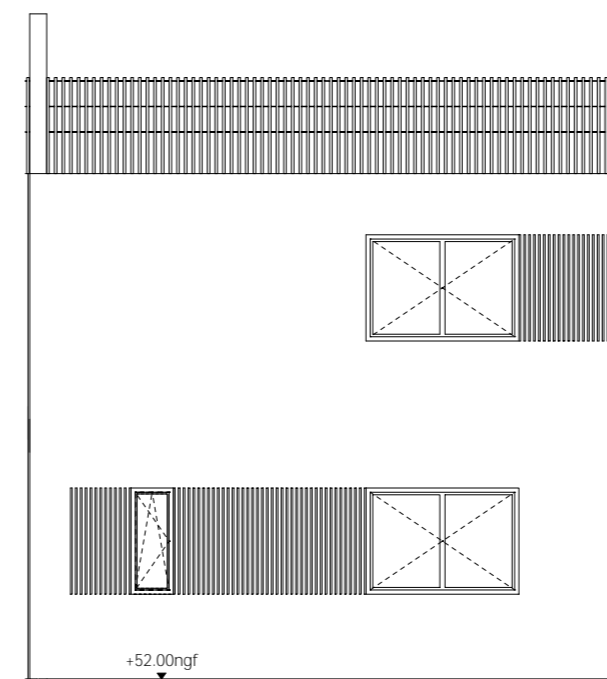
Angers



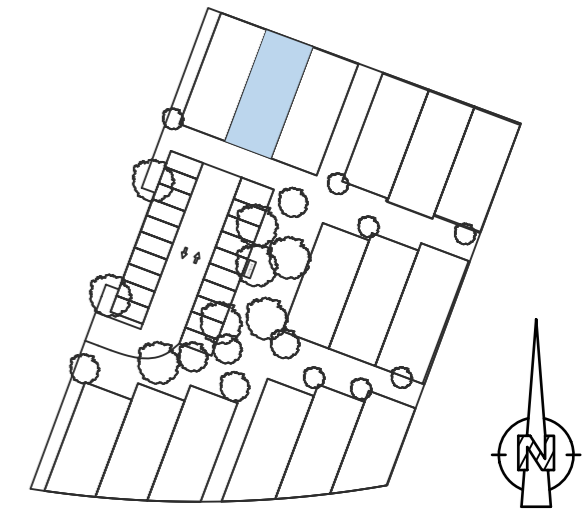
Plan de toiture



Façade Sud



Façade Nord



N° MAISON	TYPE
02	T4

EV Rooftop	14,71 m ²
EV R+1	8,55 m ²
Jardin	27,00 m ²
Terrasse 01	13,70 m ²
Terrasse 02	14,61 m ²
Terrasse 03	13,93 m ²
Abri de jardin	4,67 m ²

PARCELLE 122 m²

SHAB 88.52 m²